



LINE NO.	DIRECTION	LENGTH
1-1	S 51° 24' 08" W	68.03
1-2	E 17° 24' 07" N	18.86
1-3	N 89° 17' 47" W	35.03
1-4	N 84° 18' 41" W	15.98
1-5	N 77° 47' 41" W	33.42
1-6	S 42° 52' 53" W	32.42
1-7	N 62° 52' 53" W	32.42
1-8	N 62° 52' 53" W	32.42
1-9	N 62° 52' 53" W	32.42
1-10	N 62° 52' 53" W	32.42
1-11	N 62° 52' 53" W	32.42
1-12	N 62° 52' 53" W	32.42
1-13	N 62° 52' 53" W	32.42
1-14	N 62° 52' 53" W	32.42
1-15	N 62° 52' 53" W	32.42
1-16	N 62° 52' 53" W	32.42
1-17	N 62° 52' 53" W	32.42
1-18	N 62° 52' 53" W	32.42
1-19	N 62° 52' 53" W	32.42
1-20	N 62° 52' 53" W	32.42
1-21	N 62° 52' 53" W	32.42
1-22	N 62° 52' 53" W	32.42
1-23	N 62° 52' 53" W	32.42
1-24	N 62° 52' 53" W	32.42
1-25	N 62° 52' 53" W	32.42
1-26	N 62° 52' 53" W	32.42
1-27	N 62° 52' 53" W	32.42
1-28	N 62° 52' 53" W	32.42
1-29	N 62° 52' 53" W	32.42
1-30	N 62° 52' 53" W	32.42



**Reflections Pond**

**LOT #26A 0.1751 ACRES TO BECOME PART OF LOT #26**

SEE SHEET #3 FOR ADDITIONAL INFORMATION.

CONVE	RD/US	LENGTH	BEARING	CHORD	BEARING	DELTA
C-1	118.20	118.20	S 59° 42' 30" W	176.50	S 28° 24' 30" W	53.21
C-2	118.20	118.20	S 59° 42' 30" W	176.50	S 28° 24' 30" W	53.21
C-3	118.20	118.20	S 59° 42' 30" W	176.50	S 28° 24' 30" W	53.21
C-4	118.20	118.20	S 59° 42' 30" W	176.50	S 28° 24' 30" W	53.21
C-5	118.20	118.20	S 59° 42' 30" W	176.50	S 28° 24' 30" W	53.21
C-6	118.20	118.20	S 59° 42' 30" W	176.50	S 28° 24' 30" W	53.21
C-7	118.20	118.20	S 59° 42' 30" W	176.50	S 28° 24' 30" W	53.21
C-8	118.20	118.20	S 59° 42' 30" W	176.50	S 28° 24' 30" W	53.21
C-9	118.20	118.20	S 59° 42' 30" W	176.50	S 28° 24' 30" W	53.21
C-10	118.20	118.20	S 59° 42' 30" W	176.50	S 28° 24' 30" W	53.21
C-11	118.20	118.20	S 59° 42' 30" W	176.50	S 28° 24' 30" W	53.21
C-12	118.20	118.20	S 59° 42' 30" W	176.50	S 28° 24' 30" W	53.21
C-13	118.20	118.20	S 59° 42' 30" W	176.50	S 28° 24' 30" W	53.21
C-14	118.20	118.20	S 59° 42' 30" W	176.50	S 28° 24' 30" W	53.21
C-15	118.20	118.20	S 59° 42' 30" W	176.50	S 28° 24' 30" W	53.21
C-16	118.20	118.20	S 59° 42' 30" W	176.50	S 28° 24' 30" W	53.21
C-17	118.20	118.20	S 59° 42' 30" W	176.50	S 28° 24' 30" W	53.21
C-18	118.20	118.20	S 59° 42' 30" W	176.50	S 28° 24' 30" W	53.21
C-19	118.20	118.20	S 59° 42' 30" W	176.50	S 28° 24' 30" W	53.21
C-20	118.20	118.20	S 59° 42' 30" W	176.50	S 28° 24' 30" W	53.21
C-21	118.20	118.20	S 59° 42' 30" W	176.50	S 28° 24' 30" W	53.21
C-22	118.20	118.20	S 59° 42' 30" W	176.50	S 28° 24' 30" W	53.21
C-23	118.20	118.20	S 59° 42' 30" W	176.50	S 28° 24' 30" W	53.21
C-24	118.20	118.20	S 59° 42' 30" W	176.50	S 28° 24' 30" W	53.21
C-25	118.20	118.20	S 59° 42' 30" W	176.50	S 28° 24' 30" W	53.21
C-26	118.20	118.20	S 59° 42' 30" W	176.50	S 28° 24' 30" W	53.21
C-27	118.20	118.20	S 59° 42' 30" W	176.50	S 28° 24' 30" W	53.21
C-28	118.20	118.20	S 59° 42' 30" W	176.50	S 28° 24' 30" W	53.21
C-29	118.20	118.20	S 59° 42' 30" W	176.50	S 28° 24' 30" W	53.21
C-30	118.20	118.20	S 59° 42' 30" W	176.50	S 28° 24' 30" W	53.21
C-31	118.20	118.20	S 59° 42' 30" W	176.50	S 28° 24' 30" W	53.21
C-32	118.20	118.20	S 59° 42' 30" W	176.50	S 28° 24' 30" W	53.21
C-33	118.20	118.20	S 59° 42' 30" W	176.50	S 28° 24' 30" W	53.21
C-34	118.20	118.20	S 59° 42' 30" W	176.50	S 28° 24' 30" W	53.21
C-35	118.20	118.20	S 59° 42' 30" W	176.50	S 28° 24' 30" W	53.21
C-36	118.20	118.20	S 59° 42' 30" W	176.50	S 28° 24' 30" W	53.21
C-37	118.20	118.20	S 59° 42' 30" W	176.50	S 28° 24' 30" W	53.21
C-38	118.20	118.20	S 59° 42' 30" W	176.50	S 28° 24' 30" W	53.21
C-39	118.20	118.20	S 59° 42' 30" W	176.50	S 28° 24' 30" W	53.21
C-40	118.20	118.20	S 59° 42' 30" W	176.50	S 28° 24' 30" W	53.21
C-41	118.20	118.20	S 59° 42' 30" W	176.50	S 28° 24' 30" W	53.21
C-42	118.20	118.20	S 59° 42' 30" W	176.50	S 28° 24' 30" W	53.21
C-43	118.20	118.20	S 59° 42' 30" W	176.50	S 28° 24' 30" W	53.21
C-44	118.20	118.20	S 59° 42' 30" W	176.50	S 28° 24' 30" W	53.21
C-45	118.20	118.20	S 59° 42' 30" W	176.50	S 28° 24' 30" W	53.21
C-46	118.20	118.20	S 59° 42' 30" W	176.50	S 28° 24' 30" W	53.21
C-47	118.20	118.20	S 59° 42' 30" W	176.50	S 28° 24' 30" W	53.21
C-48	118.20	118.20	S 59° 42' 30" W	176.50	S 28° 24' 30" W	53.21
C-49	118.20	118.20	S 59° 42' 30" W	176.50	S 28° 24' 30" W	53.21
C-50	118.20	118.20	S 59° 42' 30" W	176.50	S 28° 24' 30" W	53.21

**RECREATIONAL SUBDIVISION**  
**PHASE #2**  
**REFLECTIONS FARM**  
 FAMILY OWN VOLUNTARILY DEDICATED  
 COMMONWEALTH OF VIRGINIA  
 JANUARY 15, 2001  
 JENNIFER L. BOLT LS  
 137 HARRIS HOLLOW RD SW  
 FLYING VIRGINIA 24031  
 PART OF TAX MAP NO. 143-1A1-7



NUM	BEARING	DISTANCE
L1	S37°45'48"E	49.06'
L2	S33°15'13"E	48.98'
L3	S7°04'44"E	40.88'
L4	S72°04'41"E	83.07'
L5	S37°14'06"W	32.38'
L6	S12°28'09"W	55.64'
L7	S8°57'28"W	41.30'
L8	S35°13'41"W	63.22'
L9	S10°04'10"W	24.80'
L10	S80°20'10"W	719.24'
L11	S78°19'35"W	376.87'
L12	S63°38'17"W	71.33'
L13	S70°04'32"W	48.05'
L14	N55°28'14"W	81.03'
L15	N68°39'22"W	101.01'
L16	S72°15'08"W	61.03'
L17	S0°39'15"W	51.70'
L18	S68°04'15"W	58.22'
L19	N60°14'06"W	63.27'
L20	N17°51'31"W	52.65'
L21	N18°11'46"E	57.23'
L22	N60°14'10"E	62.46'
L23	N2°27'21"E	21.70'
L24	N1°28'08"W	29.35'
L25	N46°20'28"E	42.30'
L26	N46°11'38"W	41.14'
L27	S58°31'31"E	26.78'
L28	S5°25'05"W	32.45'
L29	S10°17'57"W	17.86'
L30	S24°08'44"E	47.88'
L31	S01°02'03"E	30.63'
L32	N17°50'18"W	27.31'
L33	N23°58'59"E	56.43'
L34	S65°01'05"E	24.10'
L35	N43°04'39"E	24.10'
L36	N48°04'39"E	32.88'
L37	N41°14'09"W	33.62'
L38	S65°39'24"E	33.62'
L39	S67°28'08"W	26.64'
L40	S67°28'08"W	26.64'
L41	S31°21'49"E	157.15'
L42	S37°06'37"E	65.54'
L43	S37°06'37"E	29.15'
L44	S4°15'40"E	35.74'
L45	S25°14'00"W	69.61'
L46	S57°10'21"W	11.19'
L47	S54°30'21"W	80.60'
L48	S54°30'21"W	37.19'
L49	S54°30'21"W	24.42'
L50	N63°47'52"W	74.27'
L51	N16°39'58"W	133.37'
L52	N08°22'58"W	47.40'
L53	N08°22'58"W	47.40'
L54	S58°13'11"W	26.19'
L55	S54°48'57"E	52.50'
L56	S58°13'11"W	34.09'
L57	S17°34'18"W	332.08'
L58	S32°36'22"W	103.45'
L59	N16°58'34"W	43.08'
L60	N17°16'51"E	113.50'
L61	N17°16'51"E	39.27'

**LWF Lots 1st Rd. Down to Right**

**All Lots Creek & some w/ Piedmont Views**

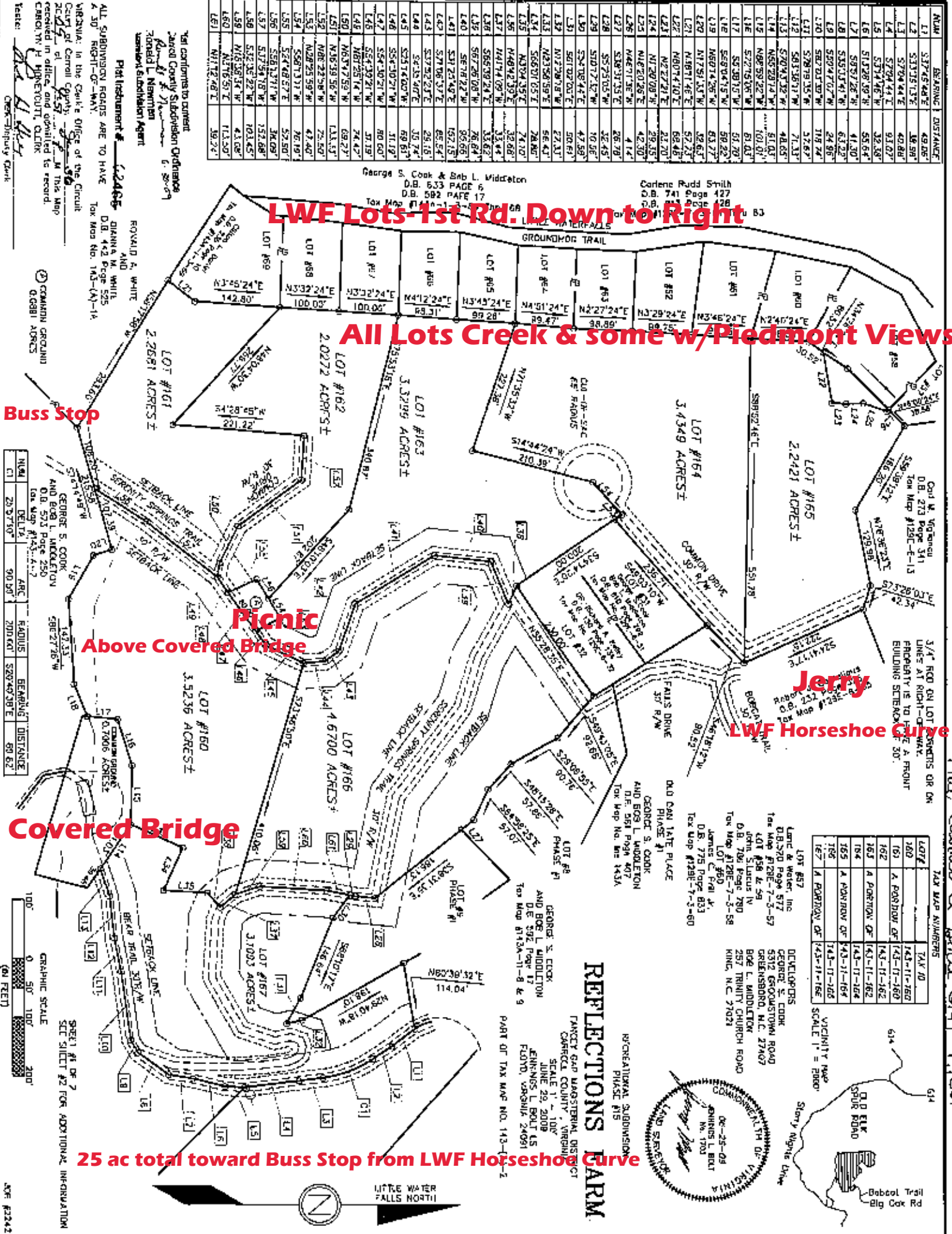
**Buss Stop**

**Picnic Above Covered Bridge**

**Jerry LWF Horseshoe Curve**

**Covered Bridge**

**25 ac total toward Buss Stop from LWF Horseshoe Curve**



ARC	BEARING	DISTANCE
C1	23°37'50"	90.50'
C2	DELTA	90.50'
C3	ARC	200.00'
C4	RADIUS	520°45'38"
C5	BEARING	50.62'
C6	DISTANCE	50.62'

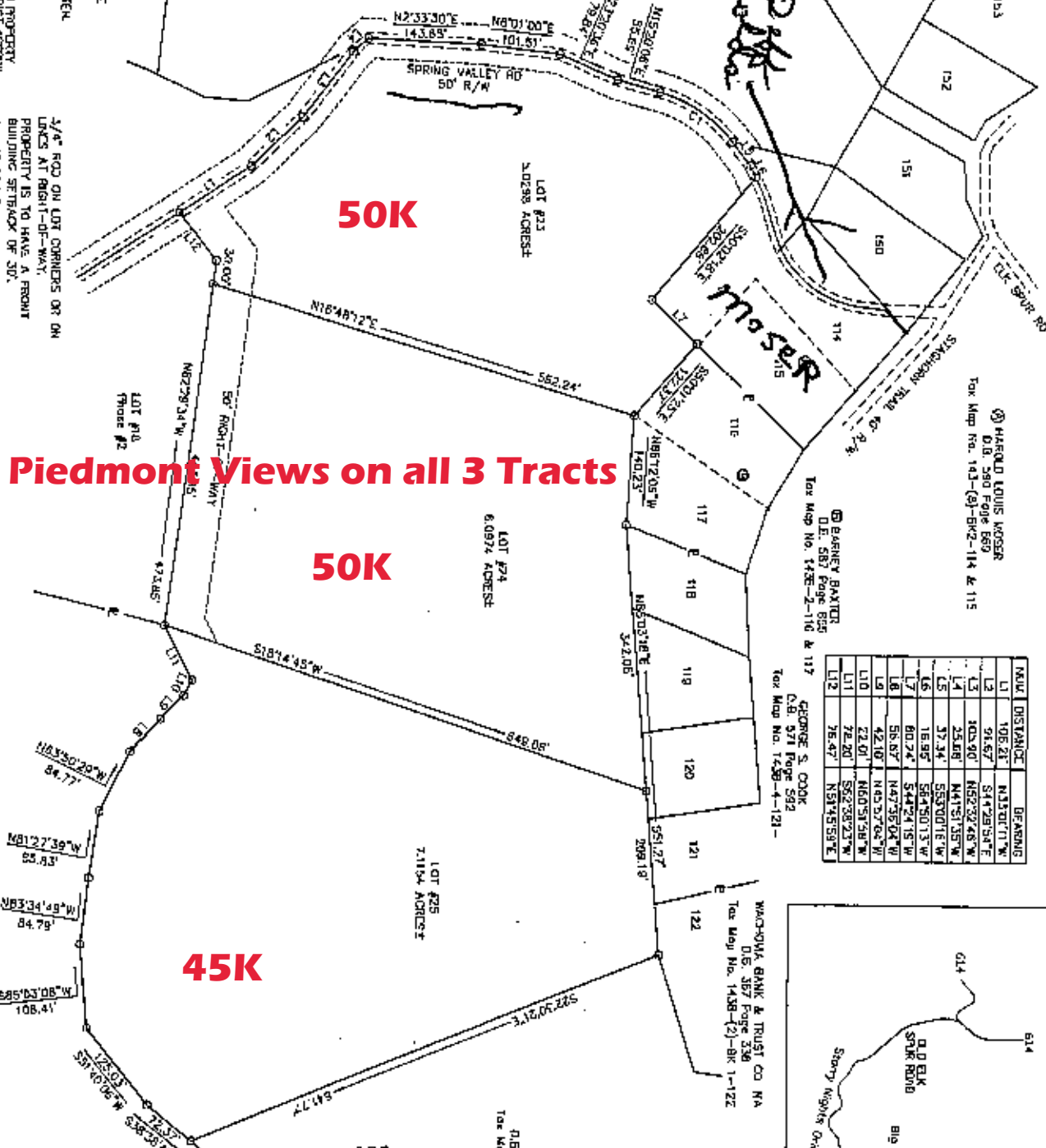
LOT #	TAKE UP	TAKE UP
167	143-11-167	143-11-167
168	143-11-168	143-11-168
169	143-11-169	143-11-169
170	143-11-170	143-11-170
171	143-11-171	143-11-171
172	143-11-172	143-11-172
173	143-11-173	143-11-173
174	143-11-174	143-11-174
175	143-11-175	143-11-175
176	143-11-176	143-11-176
177	143-11-177	143-11-177
178	143-11-178	143-11-178
179	143-11-179	143-11-179
180	143-11-180	143-11-180
181	143-11-181	143-11-181
182	143-11-182	143-11-182
183	143-11-183	143-11-183
184	143-11-184	143-11-184
185	143-11-185	143-11-185
186	143-11-186	143-11-186
187	143-11-187	143-11-187
188	143-11-188	143-11-188
189	143-11-189	143-11-189
190	143-11-190	143-11-190
191	143-11-191	143-11-191
192	143-11-192	143-11-192
193	143-11-193	143-11-193
194	143-11-194	143-11-194
195	143-11-195	143-11-195
196	143-11-196	143-11-196
197	143-11-197	143-11-197
198	143-11-198	143-11-198
199	143-11-199	143-11-199
200	143-11-200	143-11-200



406 #2344

# Spring Valley

## George Fowels



**Piedmont Views on all 3 Tracts**

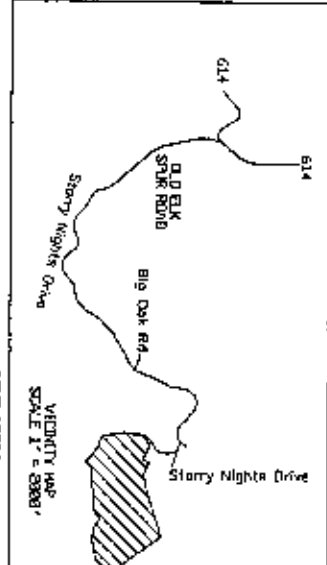


LITTLE WATER FALLS NORTH

*Ronald*

**Maser**

LOT	BEARING	DISTANCE	ACRES
L1	N13°07'11"W	106.21'	1.06
L2	S44°29'54"E	91.67'	0.92
L3	N52°32'46"W	103.90'	1.04
L4	N41°51'35"W	25.08'	0.25
L5	S53°01'16"W	37.34'	0.37
L6	S44°50'13"W	16.95'	0.17
L7	S44°24'15"W	80.74'	0.81
L8	N47°35'04"W	58.87'	0.59
L9	N45°27'06"W	42.10'	0.42
L10	N40°51'58"W	72.01'	0.72
L11	S52°38'27"W	72.20'	0.72
L12	N51°45'59"E	76.47'	0.76



ALL RIGHTS ARE PRIVATE AND WILL NOT BE REVERTED TO THE VIRGINIA DEPARTMENT OF TRANSPORTATION AND WILL NOT BE BROUGHT INTO THE STATE SECONDARY SYSTEM.

DRAWN BY: *[Signature]*

STATE OF VIRGINIA  
 DEPARTMENT OF LAND AND WATER  
 COUNTY OF CARROLL  
 TO: *[Name]*  
 BY: *[Name]*  
 DATE: *[Date]*

3/4" ROAD ON LOT CORNERS OR ON LINES AT RIGHT-OF-WAY. PROPERTY IS TO HAVE A FRONT BUILDING SETBACK OF 30'.

STATE OF VIRGINIA  
 DEPARTMENT OF LAND AND WATER  
 COUNTY OF CARROLL  
 TO: *[Name]*  
 BY: *[Name]*  
 DATE: *[Date]*

WILLIAM S. COOK  
 D.B. 232 Page 186  
 Tax Map No. 143-(A)-36

WILLIAM S. COOK  
 D.B. 232 Page 186  
 Tax Map No. 143-(A)-36

WILLIAM S. COOK  
 D.B. 232 Page 186  
 Tax Map No. 143-(A)-36

WILLIAM S. COOK  
 D.B. 232 Page 186  
 Tax Map No. 143-(A)-36



DELTA ARC FABRUS BEARING DISTANCE  
 37°40'00" 153.78' 173.06' N34°10'09"E 11.74'

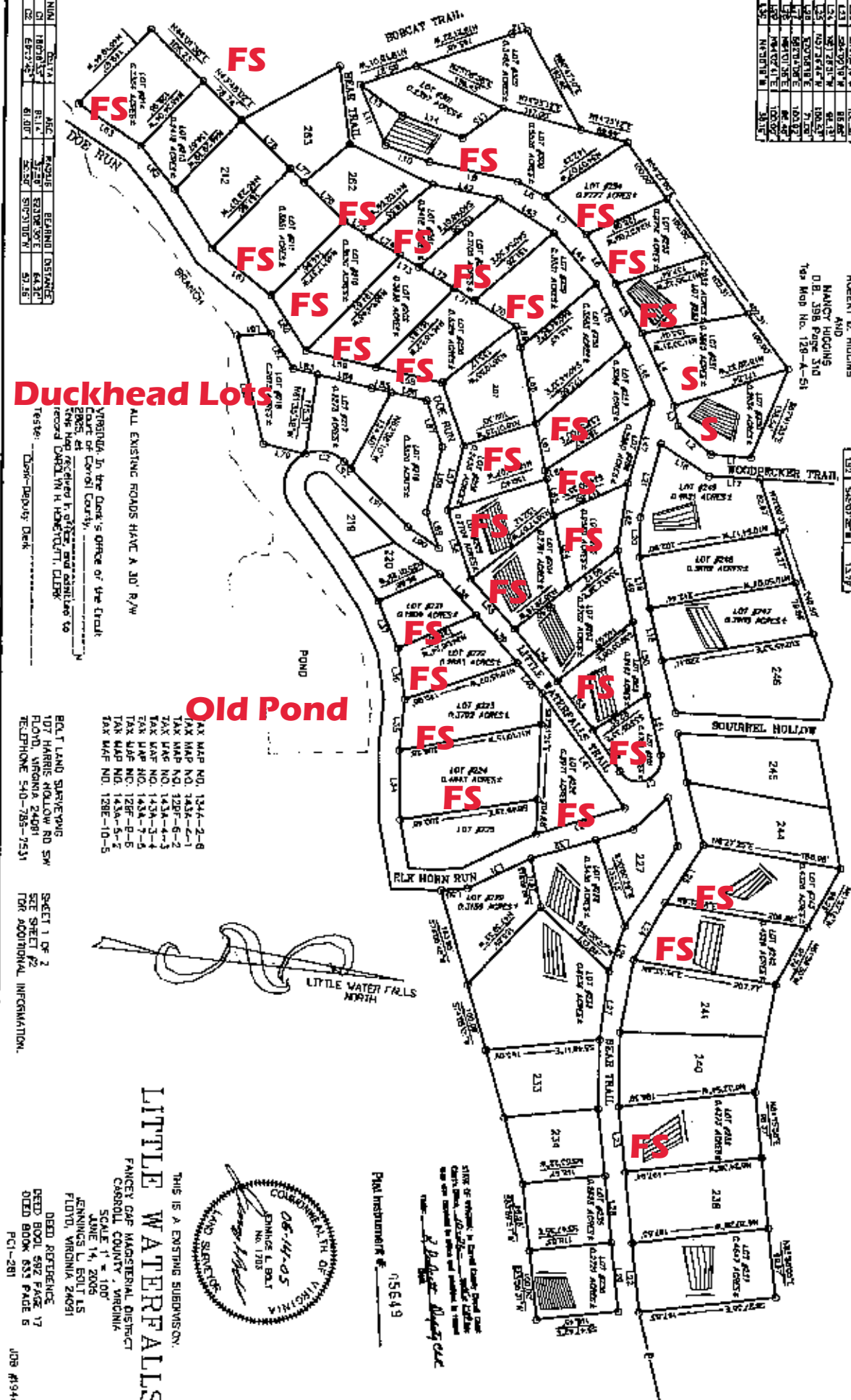
WALLACE W. LEONARD  
 D.B. 489 Page 878  
 Tax Map No. 143-(A)-33

SPRING VALLEY FARMS  
 RECREATIONAL SUBDIVISION  
 PHASE #5  
 FRANCIS GAP MARSHALL DISTRICT  
 CARROLL COUNTY, VIRGINIA  
 SCALE 1" = 100'  
 JUNE 10, 2004  
 JENNINGS L. BOLT LS  
 FLOYD, VIRGINIA 24091

409 01805

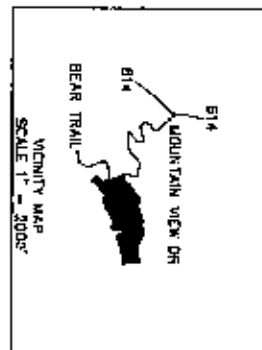


BLK	BEARING	DISTANCE	BLK	BEARING	DISTANCE	BLK	BEARING	DISTANCE	BLK	BEARING	DISTANCE
11	S 10° 00' 00" W	37.00	120	N 82° 00' 00" W	107.30	141	N 82° 00' 00" W	110.30	161	N 71° 43' 30" W	64.80
12	S 89° 00' 00" W	62.00	121	N 71° 43' 30" W	64.80	142	N 82° 00' 00" W	110.30	162	N 82° 00' 00" W	110.30
13	S 89° 00' 00" W	62.00	122	N 71° 43' 30" W	64.80	143	N 82° 00' 00" W	110.30	163	N 82° 00' 00" W	110.30



**FS= For Sale**

DR. JAY WAYNE MEREDITH AND GAYLE CLOBERT MEREDITH  
 DB, 1st Page 318 & 53  
 Tax Map No. 129-A-52 & 53



**Duckhead Lots**

ALL EXISTING ROADS HAVE A JOI R/W

VERONICA J. de la Cruz, Clerk of the Court  
 Clerk of Carroll County

**Old Pond**

TAX MAP NO. 1344-2-8  
 TAX MAP NO. 1436-6-1  
 TAX MAP NO. 129F-6-2  
 TAX MAP NO. 1434-4-3  
 TAX MAP NO. 1438-3-4  
 TAX MAP NO. 1438-7-5  
 TAX MAP NO. 129F-8-5  
 TAX MAP NO. 1436-5-7  
 TAX MAP NO. 129E-10-5



# LITTLE WATERFALLS

NW/4	SW/4	SE/4	NE/4	TOTAL ACRES
100	100	100	100	400

BOLT LAND SURVEYING  
 107 HARRIS HOLLOW RD SW  
 FLOYD, VIRGINIA 24091  
 TELEPHONE: 540-765-7531

SHEET 1 OF 2  
 SEE SHEET #2  
 FOR ADDITIONAL INFORMATION.

THIS IS A EXISTING SUBDIVISION.  
 FANCY GAP INDUSTRIAL DISTRICT  
 CARROLL COUNTY, VIRGINIA  
 SCALE 1" = 100'  
 JUNE 14, 2005  
 JENNINGS L. SULLIVAN  
 FLOID, VIRGINIA 24091  
 DEED REFERENCE  
 DEED BOOK 582 PAGE 17  
 DEED BOOK 633 PAGE 6  
 PCL-281

JOB #1944